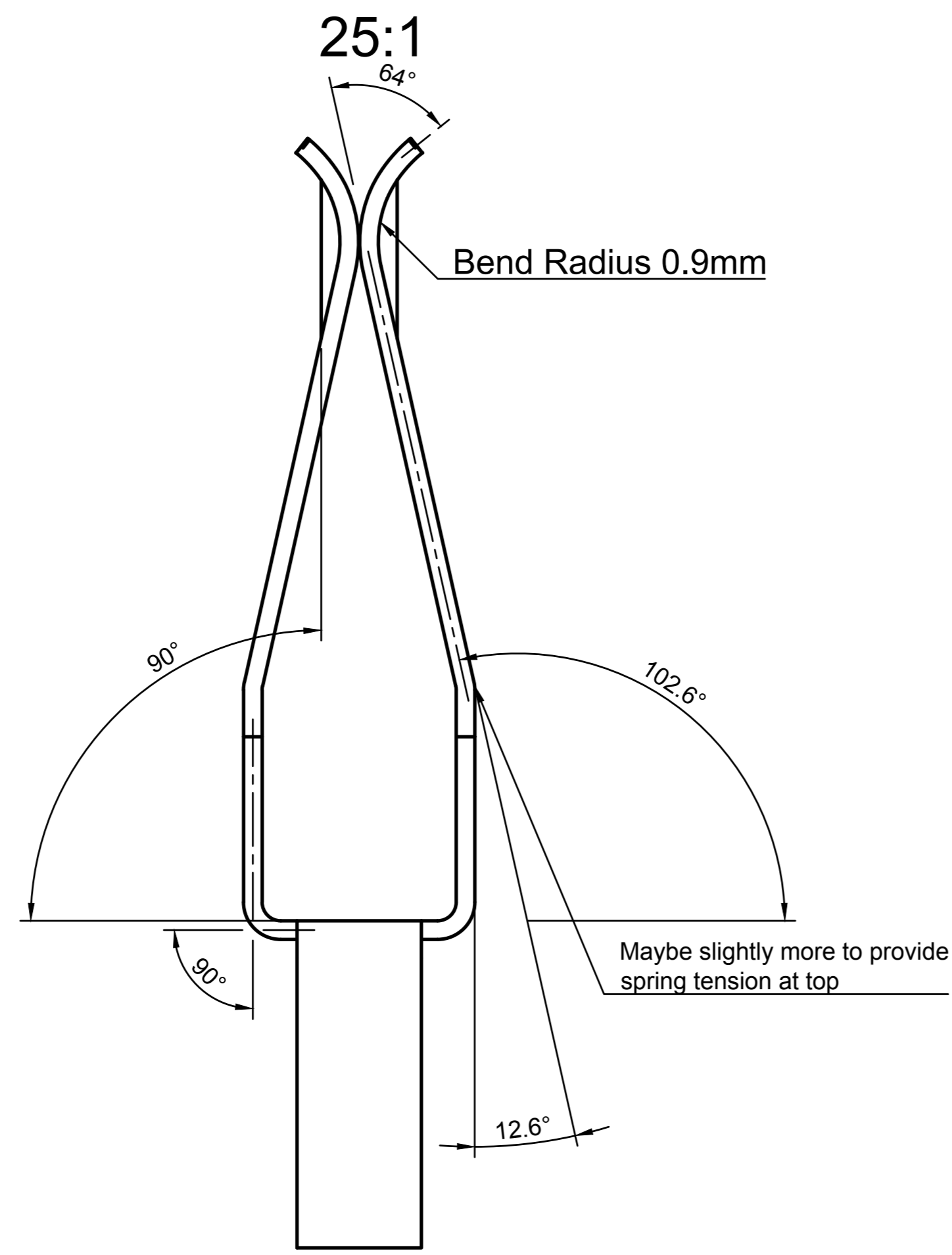
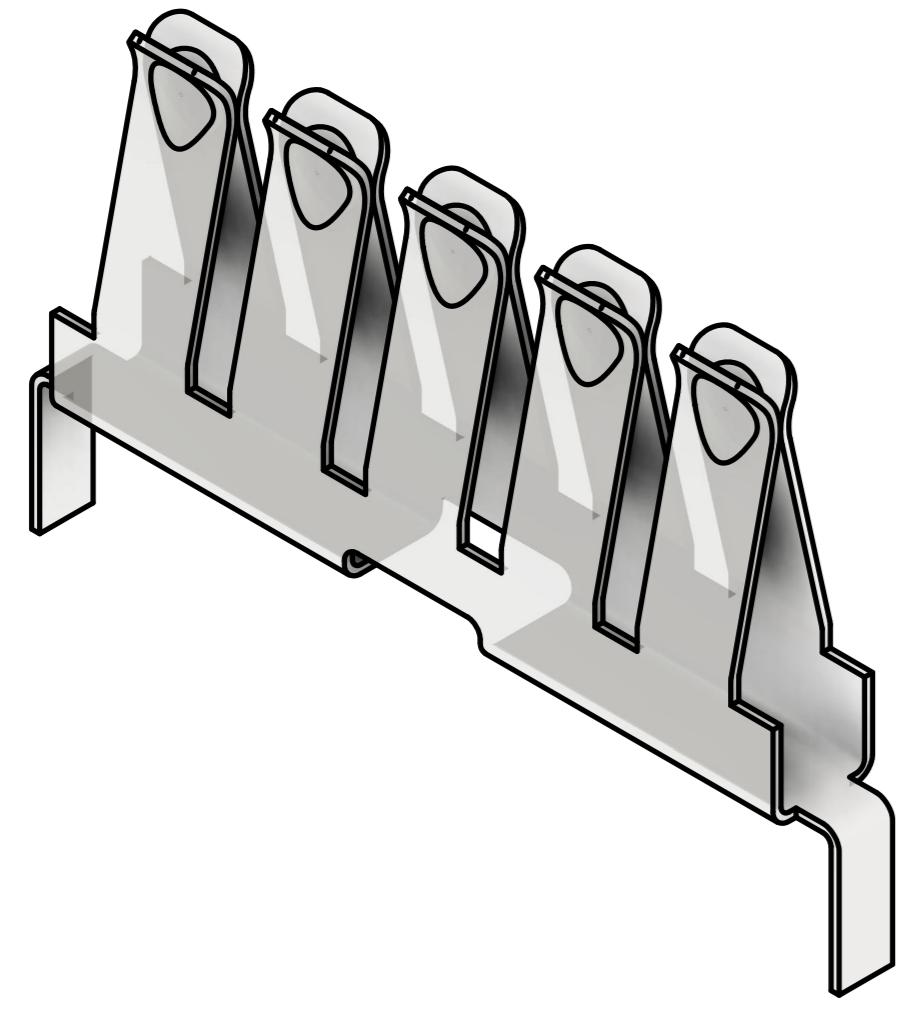
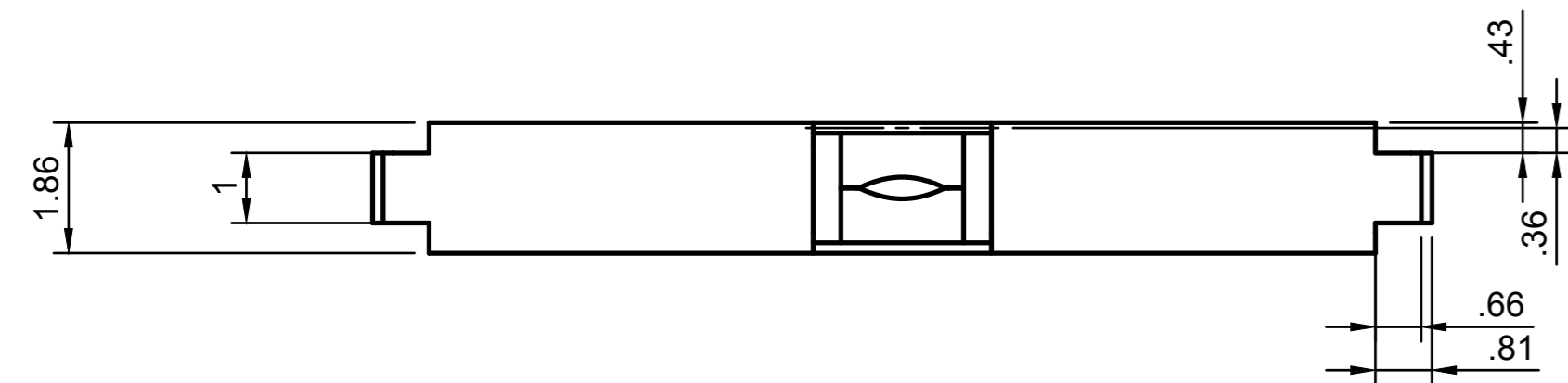
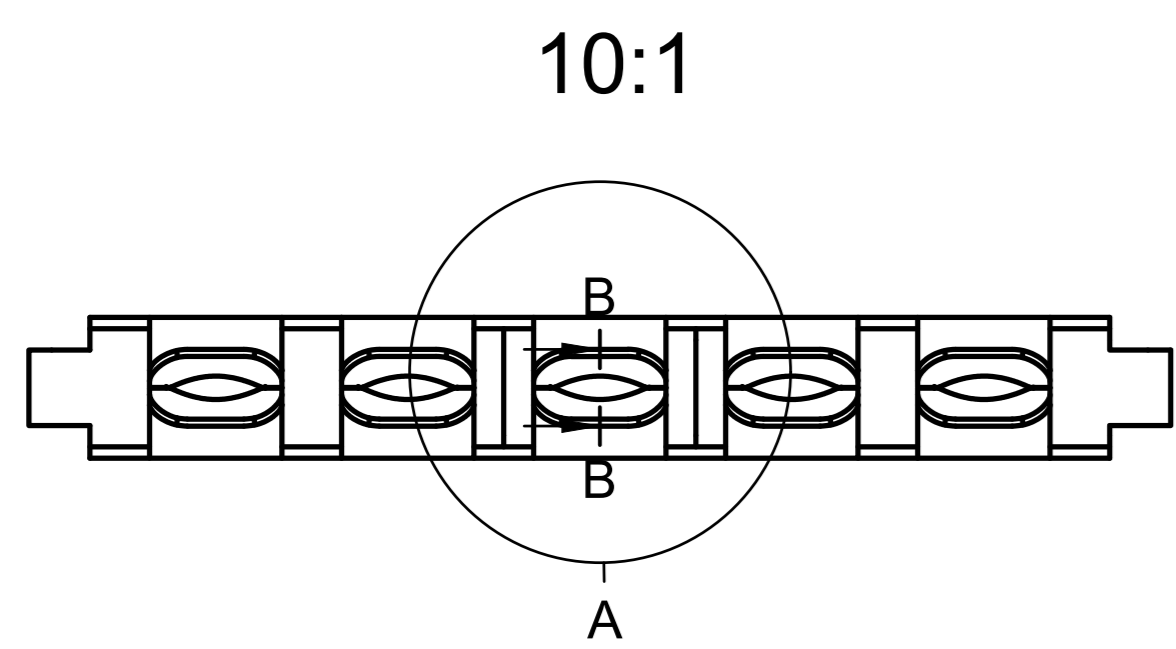
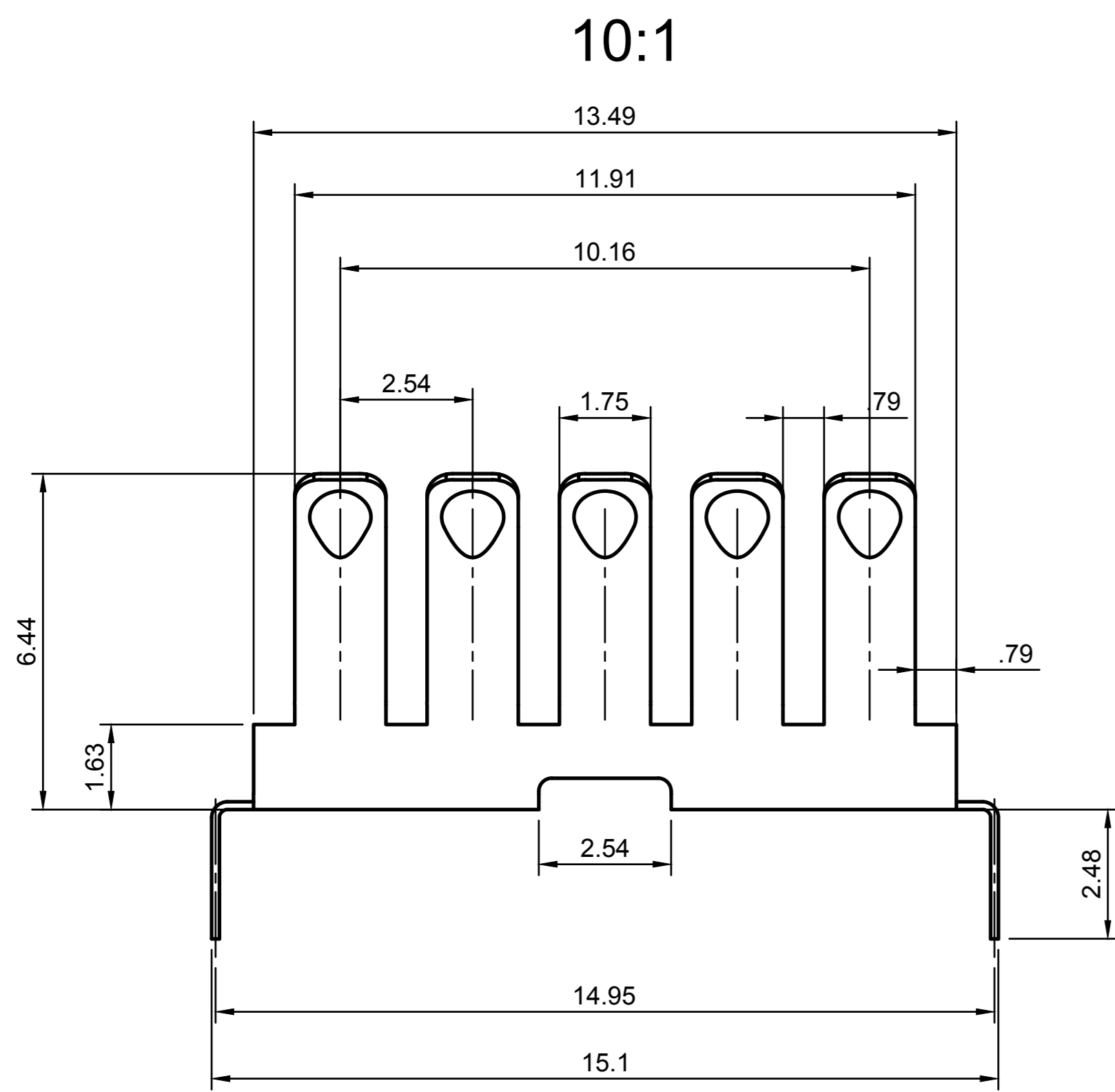
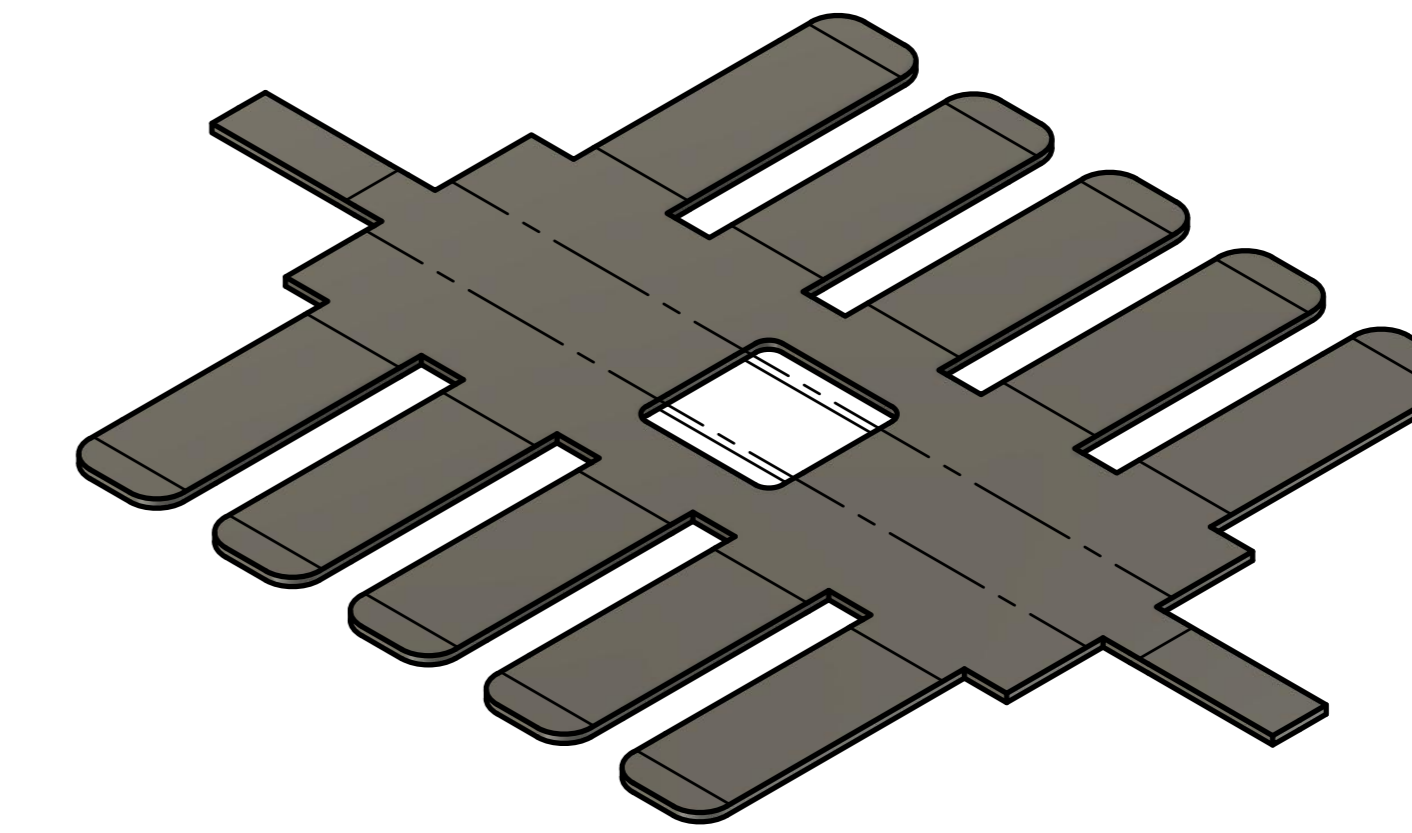


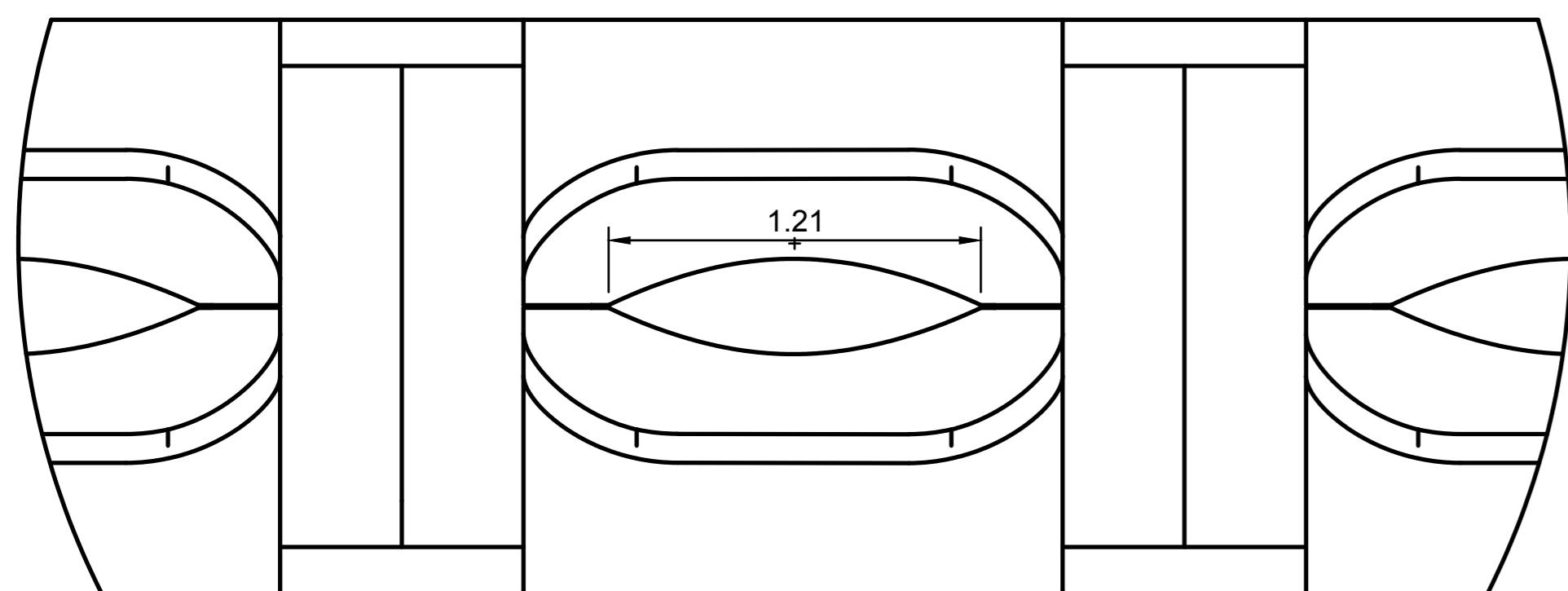
Folded



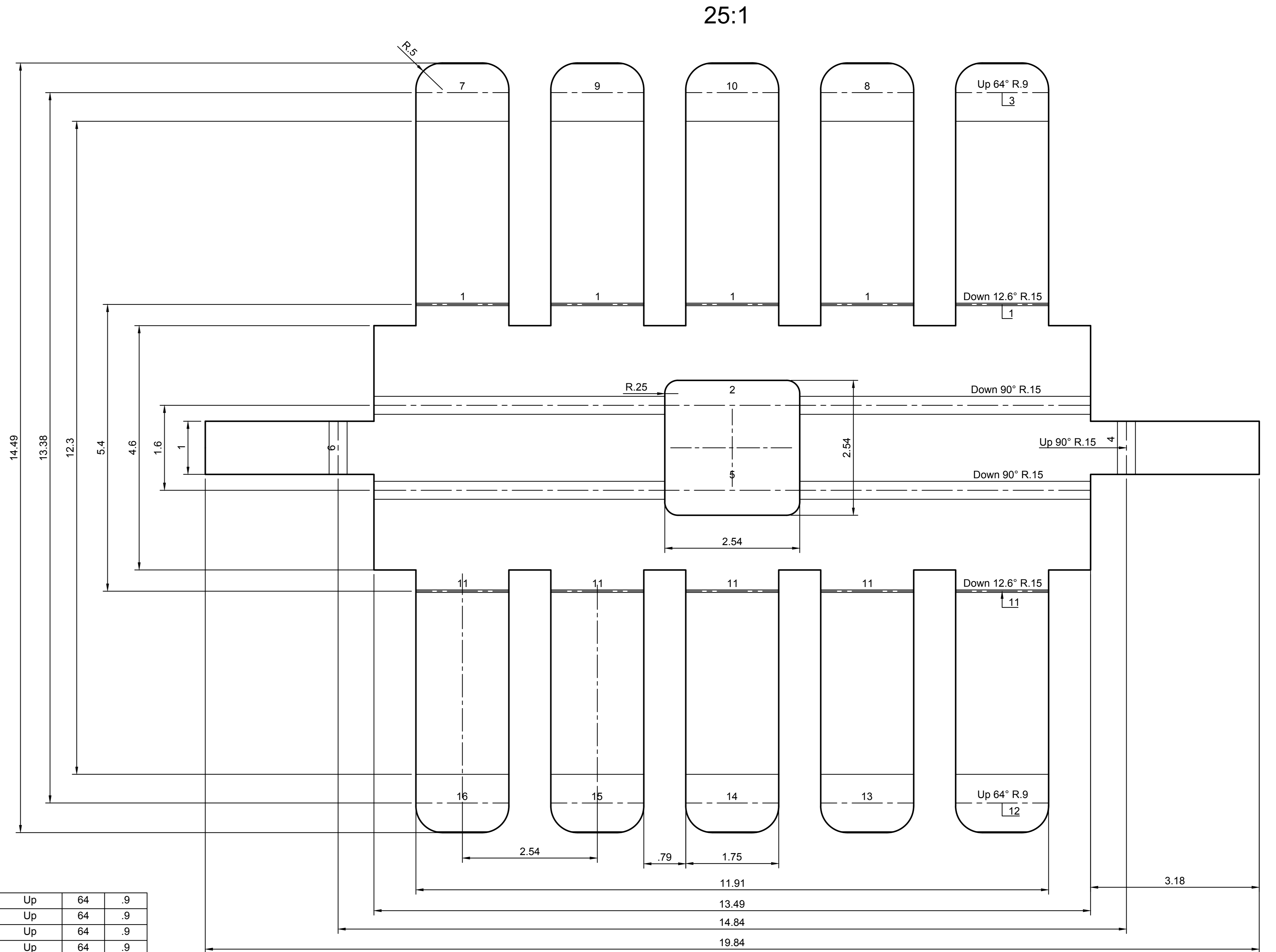
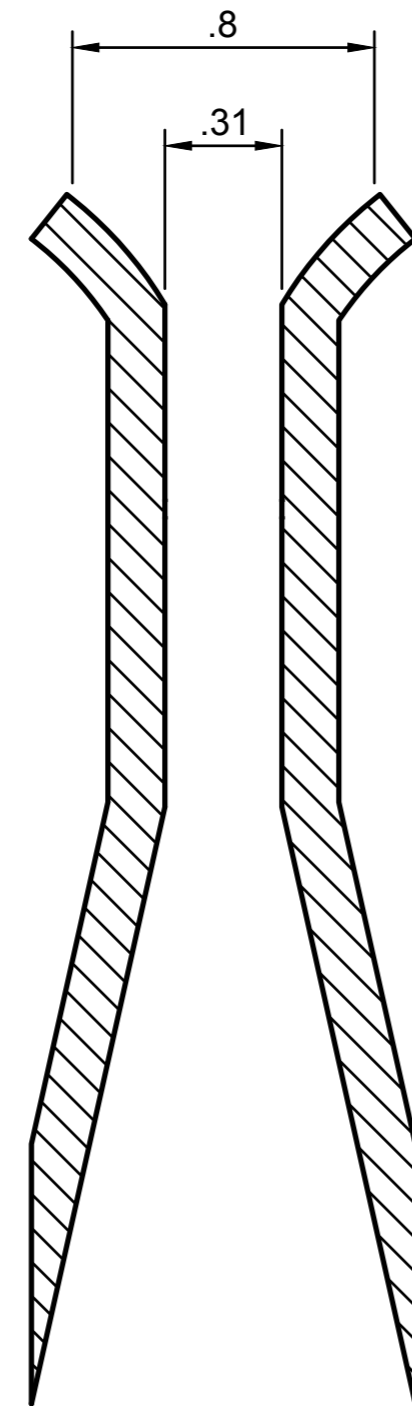
Flat Pattern



A (50:1)



B-B (50:1)



ID	Direction	Angle	Radius
16	Up	64	.9
15	Up	64	.9
14	Up	64	.9
13	Up	64	.9
12	Up	64	.9
11	Down	12.6	.15
10	Up	64	.9
9	Up	64	.9
8	Up	64	.9
7	Up	64	.9
6	Up	90	.15
5	Down	90	.15
4	Up	90	.15
3	Up	64	.9
2	Down	90	.15
1	Down	12.6	.15

Bend Table

Tolerances		Material	
Angle	+/- 1°	Phosphor Bronze OR Steel	Please quote both
Dimensions	+/- 0.05mm	Spring Temper	
Material Thickness	+/- 0.05mm	Plating not necessary	Let me know if it's suggested
		0.15 mm Thickness	

Other Notes	
The place where the metal fingers meet at the top should have a little bit of tension toward each other. They're electrical contacts for a breadboard, so wire in the range of 0.3mm-1mm should be able to slide in smoothly and make good electrical contact consistently.	
Bend 11 should be increased to provide more tension if the contacts at the top don't squeeze together.	